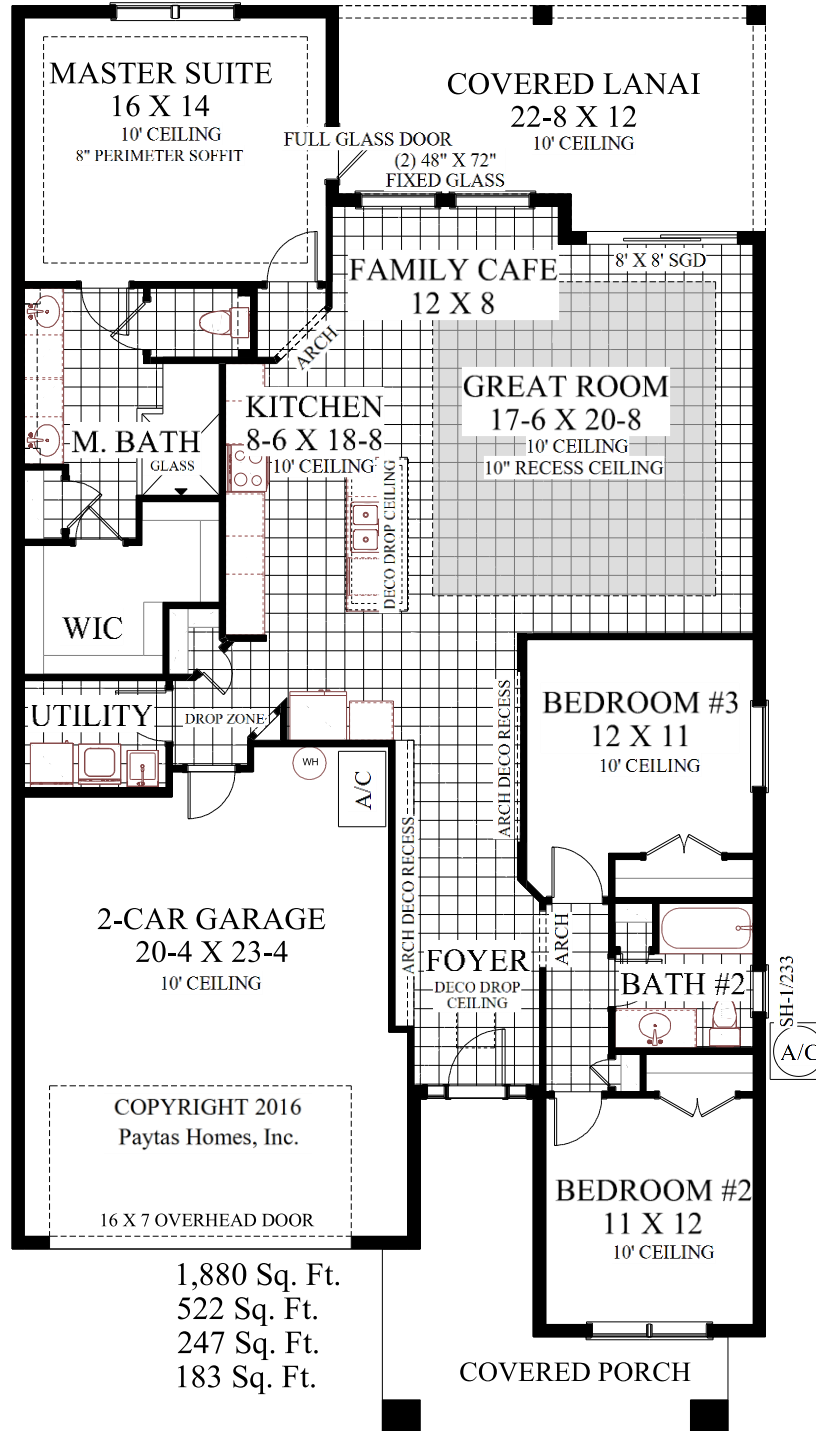




# BRIGHTON

201 HAWTHORN AVE, PALM COAST, FL 32164  
 LOT 1, COASTAL GARDENS AT TOWN CENTER



Living Area	1,880 Sq. Ft.
Garage	522 Sq. Ft.
Lanai	247 Sq. Ft.
Entry	183 Sq. Ft.
<b>TOTAL UNDER ROOF</b>	<b>2,832 Sq. Ft.</b>



*Best Local Builder.*

February 6, 2024

Prices shown include all features on the feature sheet and for building in the Coastal Gardens Only. Any home built outside of the Coastal Gardens is subject to pricing on an individual basis. Consult your sales associate. We do our best to control prices. However, due to material increases and situations beyond our control, prices are subject to change without notice or obligation.