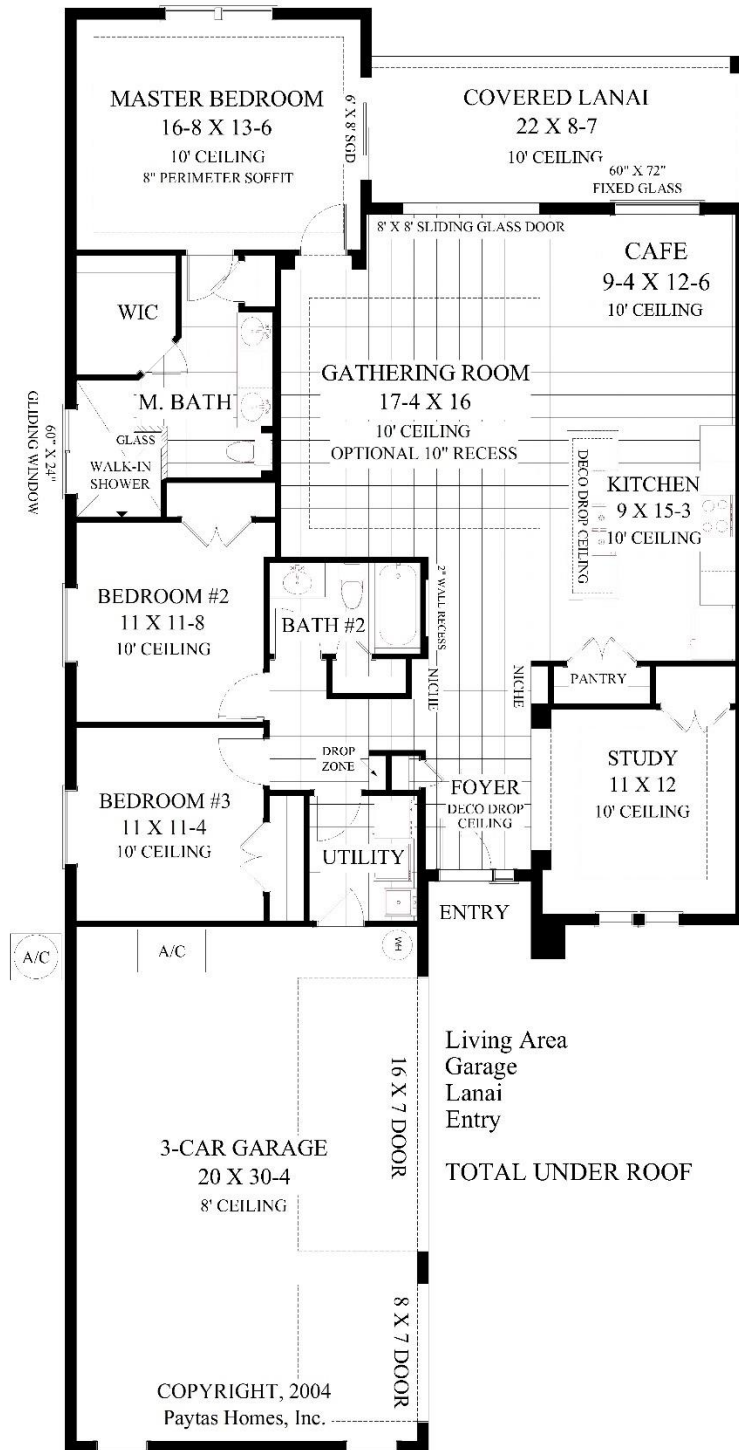




# WESTCOTTE

ELEVATION "B"

5 JUNIPER LANE, PALM COAST, FL 32164  
 LOT 30, COASTAL GARDENS AT TOWN CENTER



Living Area	1,885 Sq. Ft.
Garage	658 Sq. Ft.
Lanai	189 Sq. Ft.
Entry	32 Sq. Ft.
<b>TOTAL UNDER ROOF</b>	<b>2,764 Sq. Ft.</b>

COPYRIGHT, 2004  
 Paytas Homes, Inc.

**PAYTAS HOMES**

February 14, 2024

Prices shown include all features on the feature sheet and for building in the Coastal Gardens Only. Any hour to pricing on an individual basis. Consult your sales associate. We do our best to control prices. However, our control, prices are subject to change without notice or obligation.

*Best Local Builder.*